

# Rigol Digital Multimeter

## Model DM3058



**Product Dimensions:** Weight: 2.5 kg  
**Width×Height×Depth:** 232mm×107mm×91mm

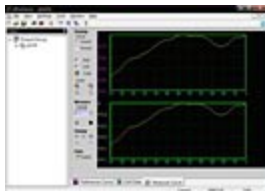
### Applications:

1. Manufacturing Test
2. Quality Test
3. Laboratory
4. Scientific research and Education
5. Maintenance

### Features:

1. True 5½ digits resolution (240,000-count)
2. 120 rdgs/s maximum sample rate
3. Up to 0.015% accuracy of DC Voltage per year
4. Command compatibility. Replace mainstream DMM randomly via the compatibility of their command
5. Patented Any Sensor test capability
6. 256×64 pixels LCD display, to support multi-display and screen menu
7. Interfaces: GPIB, LAN LXI-C Class, RS-232, USB Host and USB Device

### Advanced Performance



### Ultrasensor Software

### Standard Accessories



Power Cord



Test Lead Kit



Backup Fuse



USB Cable

### Optional Accessories



CD-ROM



Quick Guide



Warranty Card

## Performance Characteristics

		<b>Specifications:</b>	
<b>Measurement Function</b>	<b>Range</b>	<b>Frequency Range/ Testing Current</b>	<b>Accuracy: 1 year ± ( % of reading + % of range)</b>
<b>DC Voltage</b>	200mV □ 1000V		0.015 + 0.003
<b>DC Current</b>	200uA □ 10A		0.020 + 0.005
<b>AC Voltage(RMS)</b>	200mV □ 750V	20Hz □ 100kHz	0.20 + 0.05
<b>AC Current(RMS)</b>	20mA □ 10A	20Hz □ 10kHz	0.30 + 0.06
<b>Resistance (2-wire and 4-wire)</b>	200Ω □ 100MΩ		0.020 + 0.003
<b>Capacitance</b>	2nF □ 10000uF		1.0 + 0.5
<b>Diode test</b>	2.4V	1mA	0.05 + 0.01
<b>Frequency and Period</b>	200mV □ 750V 20mA □ 10A	10Hz □ 1MHz 10Hz □ 100kHz	0.01 + 0.003 0.01 + 0.003
<b>Continuity</b>	2KΩ	1mA	0.05 + 0.01

*Note □ All the indicators are the typical value under standard test situation*

### Other Parameters

<b>Measurement Function</b>	DC Voltage □ DC Current □ AC Voltage(RMS) □ AC Current(RMS) □ Resistance(2-wire and 4-wire) □ Capacitance □ Diodes test □ Frequency and Period □ Continuity □ short current □ any sensor
<b>Math</b>	“Pass/Fail” Limit Test □ Standard Deviation □ Histogram □ Relatively □ Null, Max/Min/Avg, dBm, dB
<b>Other Functions</b>	Built-in 10 groups of configuration storage, 10 groups of configuration storage of any sensor, 2048 historical reading data record and check, 10 groups of historical datum storage, Exterior trigger input and VMC output □ Reading hold □ Single trigger
<b>Display Characteristic</b>	Multi-display, menu, multi-language help and waveform display
<b>Security</b>	CAT II 600V □ CAT I 1000V. Contaminated Class 2
<b>Shock and Vibration</b>	MIL-T-28800, type III □ class 5 □ sine □
<b>Power Supply</b>	110/220V ±20%, 45 □ 65Hz, 20W Max